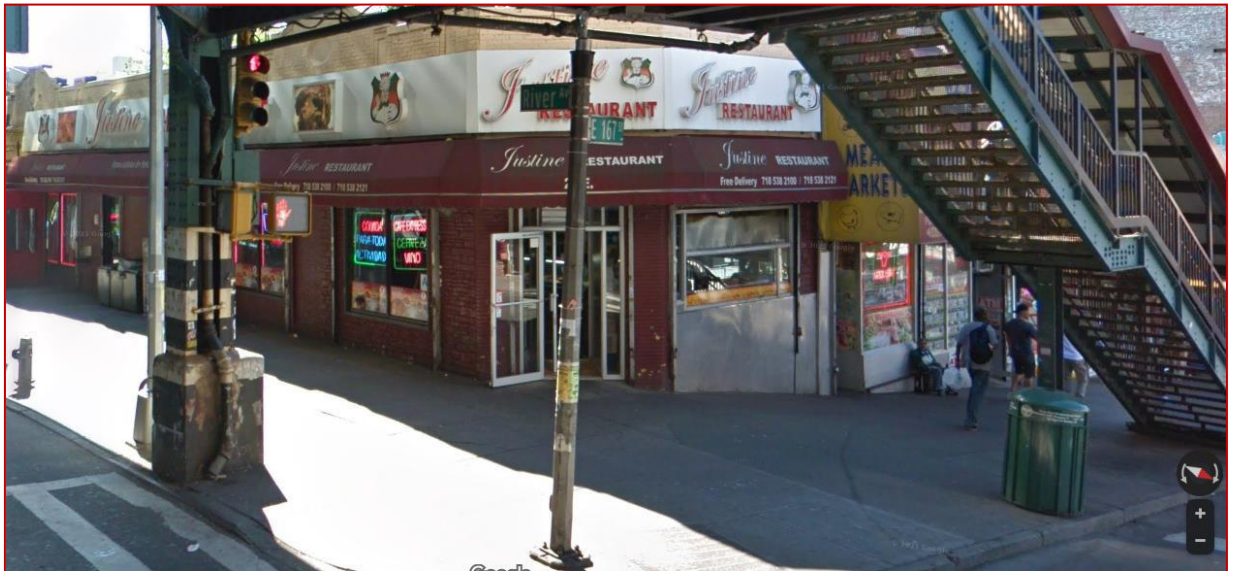


# 28 EAST 167TH STREET

CORNER OF EAST 167TH AND RIVER AVENUE  
BRONX, NEW YORK



FOR MORE INFORMATION CONTACT  
[Chestnutcommercial.com](http://Chestnutcommercial.com)  
917-225-9199

# SPACE DETAILS

## LOCATION

28 East 167<sup>th</sup> Street  
Corner of 167<sup>th</sup> St & River Av.  
Bronx, New York

## POSSESSION

Immediate

## RETAIL SIZE

3020 SF Ground

## ALL USES CONSIDERED

## ASKING RENT (monthly)

\$17,000 (\$68 PSF)

## NEIGHBORS

- Dunkin Donuts
- CVS Pharmacy
- Dominos
- McDonald's
- 4 blocks away from Yankee Stadium

## PREVIOUS USE

Restaurant

## TRANSPORTATION

Subway Stations  
167 Street Station



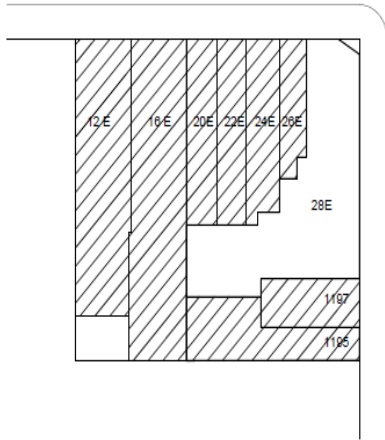
Buses

West Farms Rd /Southern Blvd BX35

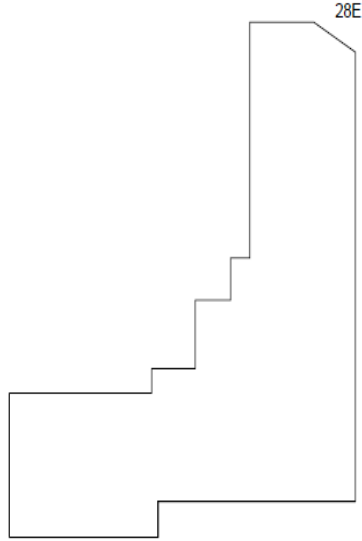
# INTERIOR PICTURES



EAST 167 STREET



RIVER AVENUE



CHESTNUT HOLDING LLC  
P.O. BOX 1402 BRONX, NY 10471

PROJECT:  
28 EAST 167 STREET  
BRONX NY 10452

DRAWING TITLE:  
GROSS FLOOR AREA

DRAWING NO:  
7

FOR MORE INFORMATION CONTACT  
**Chestnutcommercial.com**  
FSabzevari@chestnutholdings.com  
**917-225-9199**

