

# 17 W. 125TH Street Harlem



Denali Management Inc.



## FEATURES

Total SF	~1,500 SF
Ground Floor	~1,500 SF
• SPACE A	~1,500 SF

### FRONTAGE

W. 125th ST	~15'
• SPACE A	~15'

### HIGHLIGHTS

- TYPE: RETAIL
- TOTAL SF: ~1,500 SF
- MARKET: HARLEM
- '18 CEILING HEIGHT
- STORAGE AVAILABLE

## ABOUT THIS PROPERTY

**UNPARALLELED LOCATION:** 17 W. 125th St. is located between Fifth and Lenox Avenues in Central Harlem, a thriving area of Upper Manhattan that is poised for additional residential and retail growth.

**DYNAMIC LAYOUT:** The five-story pre-war elevator building is comprised of 50 rental units including 32 one-bedroom apartments, 14 two-bedroom units, and 3 three-bedroom residences. The property also features 2,800 square feet of retail space with 18-foot ceilings, and 32' of frontage along 125th Street.

**ABOUT THE NEIGHBORHOOD:** The 125th Street corridor is undergoing significant redevelopment and growth, fueled in part by the \$7 billion, 17-acre expansion of Columbia University to the west. A new Whole Foods Grocery is located one block away from 17 W. 125th St., with a new Bed, Bath & Beyond and We-work space directly adjacent to the property. The building is also near several other national retailers as well as popular dining, cultural and entertainment attractions, and just steps from public transportation including the Lenox Avenue 2/3 subway station.

**PHONE: (917) 225-9199**

# 17 W. 125th ST Harlem



Denali Management Inc.

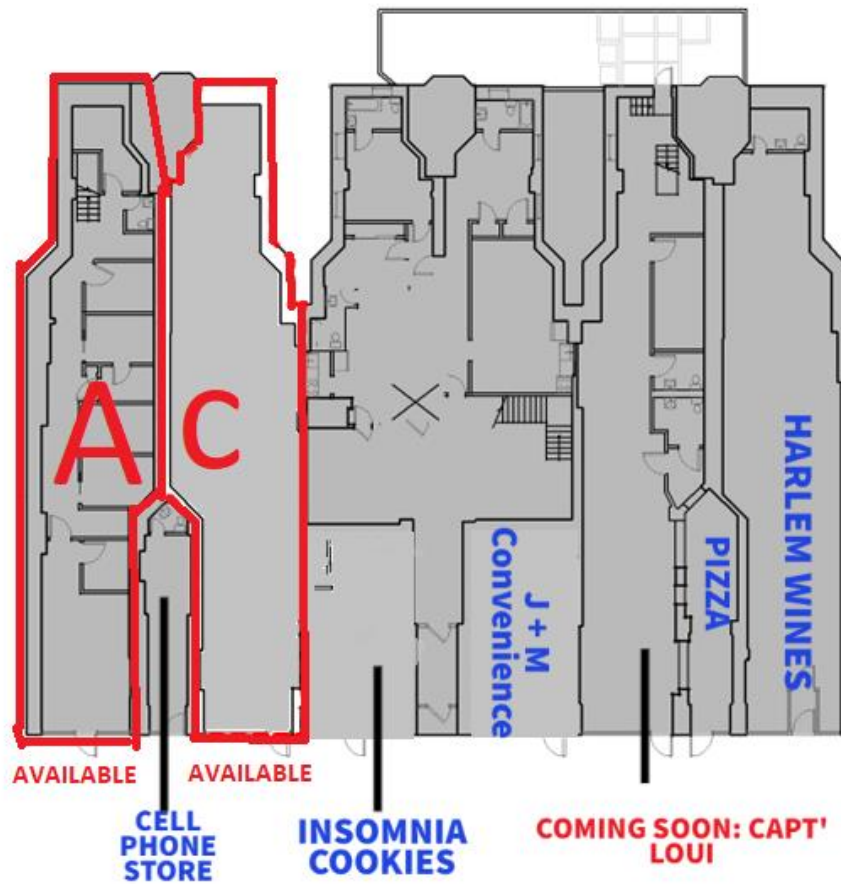
## STORE A




PHONE: (917) 225-9199



Denali Management Inc.



**PHONE: (917) 225-9199**